



Rainbow House 2010 Annual Report



**AUTOMATED
SYSTEMS**

We make IT work.

*The mission of **RAINBOW HOUSE** is to **keep children safe** and to **support families in crisis** through **prevention, assessment and intervention in child abuse and neglect.***





Dear Friend:

Rainbow House has had a record breaking year in terms of children and families served in each of our programs. These numbers emphasize the need for prevention, assessment and intervention in child abuse and neglect, and Rainbow House continues to be a place children and families trust for support during crisis situations.

Our Children's Emergency Shelter has already depleted the funds made available through June, 2011, by the Department of Social Services for Crisis Care. Though we will continue to serve children in the community whose families are in crisis, we will need additional revenue to offset the expenditures incurred in this program.

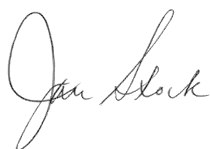
Through grants from Children's Trust Fund and 3M, we were able to increase our prevention efforts by adding more opportunities for parent education in Boone, Callaway and Audrain counties, and this year we will expand our efforts even more.

A second federal grant for our Homeless Youth Program allowed us to establish a Teen Emergency Shelter that will work hand-in-hand with our Transitional Living Program to serve homeless youth 16 to 21 years of age.

Despite the many services offered to children, youth and families, we continue to identify unmet needs in our area. Rainbow House is dedicated to our mission to keep children safe and support families in crisis and we will continue to develop other ways to offer healthier choices for at-risk families. It is the beginning of a new year, and with that comes the opportunity to make this year even better than the last.

We are very, very thankful to businesses and individuals in the community who have embraced Rainbow House with generous contributions of money, goods and time. Without your support, we would not be able to expand our services and reach out more effectively in our efforts to prevent child abuse and neglect. You have helped Rainbow House to make a huge difference in the lives of many children . . . and we humbly thank you.

Sincerely,



Jan Stock, Executive Director

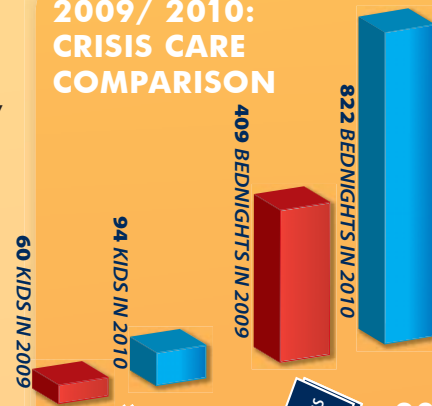
A MESSAGE FROM OUR LEADERSHIP

CHILDREN'S EMERGENCY SHELTER

The **Rainbow House Children's Emergency Shelter** has been housing children for more than 20 years. Children come to Rainbow House due to circumstances beyond their control. They may be admitted by Children's Division because they have been removed from their home and will stay at Rainbow House until a foster placement can be found, or they may be admitted through our Crisis Care Program. Crisis care children are referred by a parent/caretaker who is in crisis and is concerned about the safety of their child. This is truly a "prevention" service in that it gives the parent respite time to establish stability in their lives . . . possibly preventing abuse or neglect to the child. In 2010, a total of **23 foster & 94 crisis care children stayed 1,313 nights.**

Our goal is to give them a loving, structured environment that is safe, hopefully allowing them to put aside their troubling thoughts and just be kids!

2009/ 2010: CRISIS CARE COMPARISON



2010: TYPES OF SERVICES OFFERED TO KIDS



CLINICAL PROGRAMS

The **Rainbow House Clinical Program** provides individual, family and group therapy to the children who stay in the Children's Emergency Shelter, and to referral clients from the Child Advocacy Center and the community. Many of the children and families seen through our clinical program have experienced abuse, or they may be at risk for abuse to occur in their family system if therapeutic intervention does not occur. All of the children above the age of three who are in residence at the emergency shelter receive individual or family therapy. **259 children were served in 2010 through therapy services.** Rainbow House provides parent education opportunities through parenting classes and in 2010 offered **9 classes and served 76 parents.** Other community education opportunities include topical lectures of general interest to both community members and partnering agencies. Through our community education series we have reached **over 96 people since August of 2010.** Topics have included mandated reporting, suicide prevention, bullying, youth homelessness, and substance abuse.

CHILD ABUSE STATISTICS



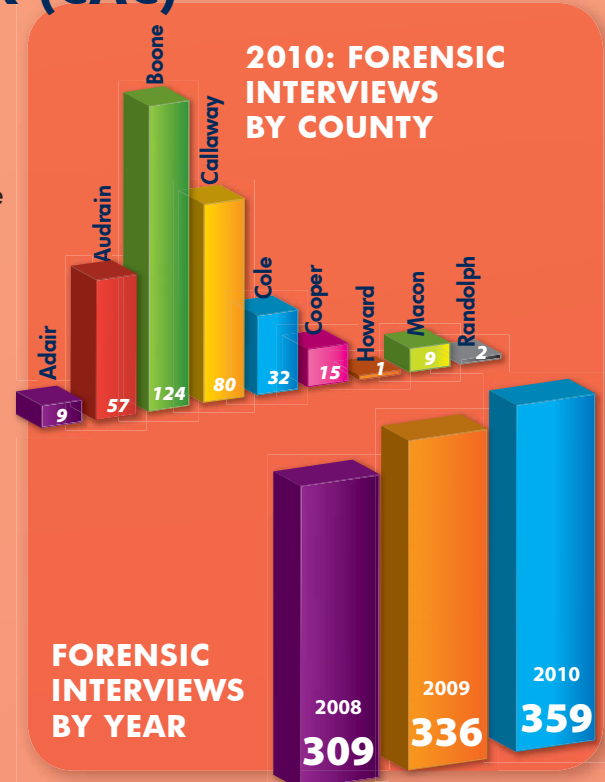
RAINBOW HOUSE PROGRAMS

REGIONAL CHILD ADVOCACY CENTER (CAC)

The **Rainbow House Regional Child Advocacy Center (CAC)** is a collaborative investigative partner of multidisciplinary teams from nine counties in the Mid-Missouri area. Together with law enforcement, juvenile court, Children's Division, and prosecutors from Adair, Audrain, Boone, Callaway, Cole, Cooper, Howard, Macon and Randolph counties, we strive to provide a thorough investigation of child sexual and severe physical abuse cases, always putting the best interest of the child first.

In order to thoroughly investigate possible abuse, it is helpful to hear the story from the child. Our goal is to provide a safe, non-threatening environment where the child can tell their story once, and where they can feel empowered by the courage they have exhibited in the telling.

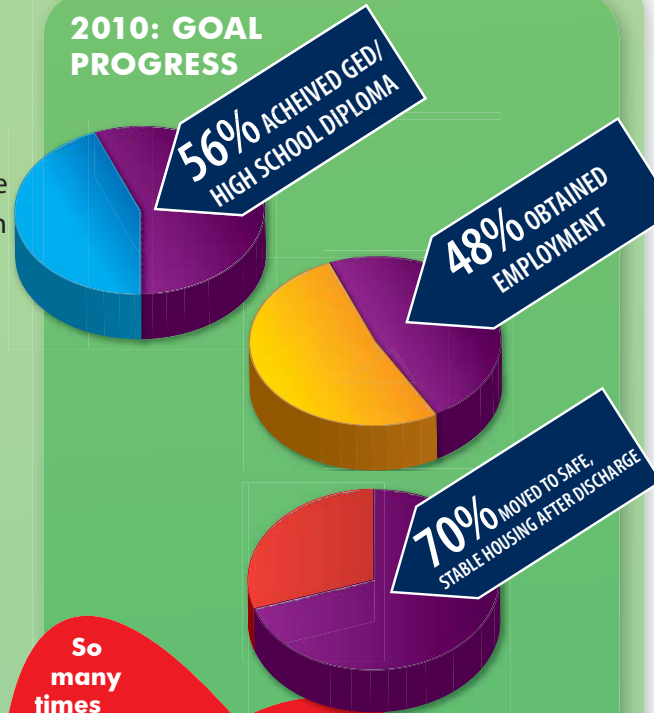
In 2010, the CAC facilitated 359 forensic (fact finding) interviews of children during investigations of sexual or extreme physical abuse. **17 children received Sexual Assault Forensic Exams (SAFE)** in an attempt to identify physical findings of abuse and collect evidence for possible prosecution. We have a SAFE doctor and an examining room at our facility, and our decor is designed to provide a child-friendly environment for these services.



HOMELESS YOUTH PROGRAM

The **Rainbow House Homeless Youth Program** is a transitional living program (for youth ages 16-21) and teen emergency shelter (for youth ages 16-18) who are in transition, homeless, or at risk for homelessness, due to unfavorable or abusive situations occurring in their current environment. The transitional living program and teen emergency shelter requires participation in educational or vocational opportunities, and/ or employment and offers supportive services such as counseling, life skills training, mentoring, job preparation and linkage to partnering organizations. In 2010, we conducted **85 intakes**. **61 of those intakes were placed on a wait list** due to lack of available bed space. In 2010, **25 youth were provided with transitional living and support services**.

2010: GOAL PROGRESS



"I have been an active board member for the Rainbow House for the past seven years. The many services Rainbow House provides are so important to our community and some are not offered anywhere else in Mid-Missouri. The dedication of the staff has always truly amazed me. It is always our mission to keep children safe and to play a part in the prevention of child abuse. RH has changed my outlook on life in so many different ways. I'm thankful I could be a part in helping others who desperately need our services."

- Keri Tipton

So many times Rainbow House has put the needs of a child before their own. I am thankful for the staff at Rainbow House and their willingness to go out of their way for us at Children's Division.

- Jen Gesch

VOLUNTEERS

Rainbow House works closely with the University of Missouri Service Learning Program, and other colleges and universities in close proximity, to give college students a learning experience by volunteering in our programs. We also have community members who give generously of their time.

In 2010, **we had 72 volunteers who donated a total of 5,271 hours** to benefit the clients we serve. These numbers do not include the hours donated by Board members, staff, and community volunteers for our special events.

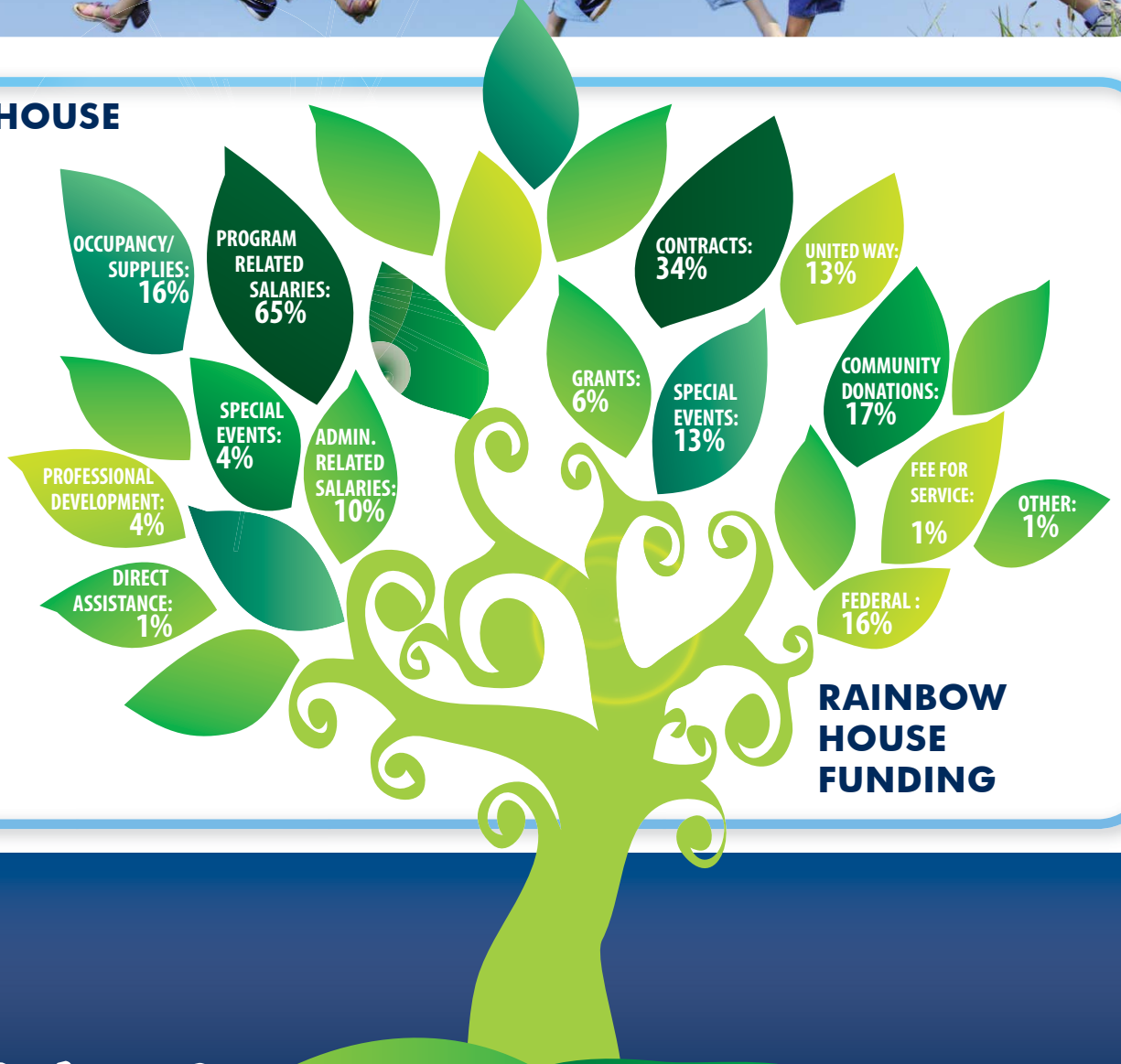
THROUGH THE YEAR

Rainbow House experiences multiple needs throughout the seasons. Giving online is a great way to be able to meet those needs throughout the year. The process is easy. Simply go to **www.rainbowhousecolumbia.org** and click on the donate today button located on the right side of the screen.



RAINBOW HOUSE EXPENSES

The funding of a non-profit is a challenging experience, especially when the organization is made up of three distinct programs. We have a financial management system in place that includes monthly oversight by the Board of Directors and a yearly audit.



RAINBOW HOUSE FUNDING

FINANCES





MISSION

The mission of Rainbow House is to keep children safe and to support families in crisis through prevention, assessment and intervention in child abuse and neglect.

BOARD OF DIRECTORS

President	Erica Pefferman
President Elect	Suzanne Flanegin
Vice President	Rob Quinn
Secretary	Stephanie Short
Treasurer	Drew Smith
Keri Tipton	Jared Reynolds
Darryl Boddie	Kori Sands
Jocelyn Tipton	Tony Mayfield
Cindy Garrett	
Virginia Pehle	

FULL TIME STAFF

Adielle Furlong	Heather Windham	Laura Parker
Andrea Shaw	Janie Bakutes	Matthew Stock
Betty Mann	Jan Stock	Nicole Brown
Brandy McDonald	John Paul Perez	Pearline Wallace
Brenda Jackman	Johanna Oldham	Rachel Talbott
Claire Slama	Kim Stewart	Te'La Helm
Connie Stith	Kristi Turner	Wendy Crane

FUNDING SOURCES



NATIONAL CHILDREN'S ALLIANCE®



CONTACT RAINBOW HOUSE

1611 Towne Drive Columbia, MO 65202
 p (573) 474.6600 f (573) 474.5992
www.rainbowhousecolumbia.org



TAX CREDITS

Youth Opportunity Program & Domestic Violence Missouri State Tax Credits

Your gift to Rainbow House may be eligible for Missouri State Tax Credits under the Youth Opportunity Program or the Domestic Violence Tax Credit Program. Donations of \$100 or more will receive a 50% credit on your State taxes, plus you will receive your regular federal tax deduction. For individuals in the 36% tax bracket, this means a \$500 gift will only cost you about \$70 after taxes are filed. Please consult your tax advisor regarding the use of tax credits. For more information on the tax credit programs offered by Rainbow House, please call us at (573) 474-6600. Minimal paperwork is required.

By helping Rainbow House kids more, it costs you less!!

YOUR DONATION PROVIDES...

\$700 One forensic interview or S.A.F.E. exam

\$240 Gas for vans to transport children for one month

\$1,000 Water/electricity for one month

\$250 Community Education Workshop

\$60 A month of milk

\$1,600 One month rent for transitional living program

\$400 12 therapy sessions

\$100 8 pairs of shoes

\$900 Total cost for 24 hour period in Children's Emergency Shelter